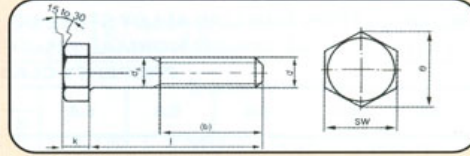


## BULONG - ĐAI ỐC (BOLT- NUTS)

### I. Thông số kỹ thuật của bulong ren nửa.

HEXAGON HEAD BOLTS  
ALTİKÖŞE BAŞLI CİVATALAR  
SECHSKANTSCHRAUBEN



Technical informations. / Teknik bilgiler.

Thread size / Anma çapı	M3	M4	M5	M6	M7	M8	M10	M12	M14	M16	M18	M20	M22	M24	M27	M30	M33	M36	M39	
Pitch / Diş adımı	P	0.50	0.70	0.80	1.00	1.00	1.25	1.50	1.75	2.00	2.00	2.50	2.50	3.00	3.00	3.50	3.50	4.00	4.00	
Wire dia / Tel çapı	min.	2.86	3.82	4.82	5.82	6.78	7.78	9.78	11.73	13.73	15.73	17.73	19.67	21.67	23.67	26.48	29.48	32.38	35.38	38.38
Head heigh / Kafa yüksekliği	k	2.0	2.8	3.5	4.8	4.8	5.3	6.4	7.5	8.8	10.0	11.5	12.5	14.0	15.0	17.0	18.7	21.0	22.5	25.0
	+/-	1.12	0.12	0.15	0.15	0.15	0.15	0.18	0.18	0.18	0.18	0.22	0.22	0.22	0.22	0.35	0.42	0.42	0.42	0.42
Head with/Anahtar a	sw	5.5	7	8	10	11	13	17	19	22	24	27	30	32	36	41	46	50	55	60
Diagonal / Köşegen	e	6.01	7.66	8.79	11.05	12.12	14.38	18.90	21.10	24.49	26.75	30.14	33.53	35.72	39.98	45.20	50.85	55.37	60.79	66.44
Thread length / Diş uzunluğu	b <sup>1</sup>	12	14	16	18	20	22	26	30	34	38	42	46	50	54	60	66	72	78	84
	b <sup>2</sup>	-	-	22	24	26	28	32	36	40	44	48	52	56	60	66	72	78	84	90
	b <sup>3</sup>	-	-	-	-	-	-	45	49	53	57	61	65	69	73	79	85	91	97	103

b<sup>1</sup>: Thread length for bolts up to 125mm. / 125mm. Boya kadar olan civatalar için diş boyu.

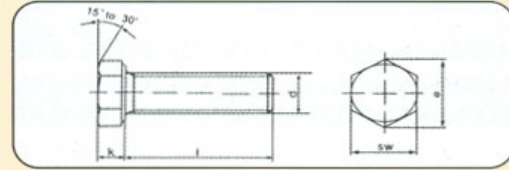
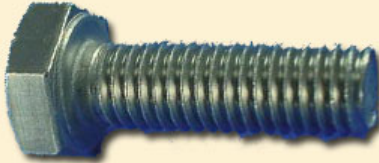
b<sup>2</sup>: Thread length for bolts between 125mm. & 200mm. / 125mm & 200mm. Boylar arasındaki civatalar için diş boyu.

b<sup>3</sup>: Thread length for bolts more than 200mm. / 200mm. 'Den uzun boylu civatalar için diş boyu.

Values are given in millimeters. / Değerler milimetre olarak verilmiştir.

Thread size / Anma çapı	M3	M4	M5	M6	M7	M8	M10	M12	M14	M16	M18	M20	M22	M24	M27	M30	M33	M36	M39			
Length / Boy	Mass for 1.000 units in kg. / 1.000 Tanesinin ağırlığı.																					
20	+/-	0.42	1.29																			
22	+/-	0.42	1.43																			
25	+/-	0.42	1.57	3.12	4.86																	
28	+/-	0.42	1.71	3.32	5.25																	
30	+/-	0.42	1.85	3.61	5.64	8.06	12.7															
35	+/-	0.50		4.04	6.42	9.13	13.6	18.2														
40	+/-	0.50		4.53	7.20	10.2	15.1	20.3	35.0													
45	+/-	0.50			7.98	11.3	16.6	22.2	38.0	53.6												
50	+/-	0.60			8.76	12.3	18.1	24.2	41.1	58.1	82.0											
55	+/-	0.60				13.4	19.5	25.8	43.8	62.6	88.1	115										
60	+/-	0.60				14.4	21.0	27.8	46.9	67.0	94.1	123										
65	+/-	0.60				15.5	22.5	29.8	50.0	70.3	98.8	131	171	219								
70	+/-	0.60				16.6	24.0	31.8	53.1	74.7	105	139	181	231	281							
75	+/-	0.60				17.6		33.7	56.2	79.1	111	147	191	243	296							
80	+/-	0.70				18.7		35.7	59.3	83.6	117	155	200	255	311	392						
85	+/-	0.70				19.8		37.6	62.4	88.1	123	163	210	267	326	410						
90	+/-	0.70				20.9		39.5	65.5	92.4	127	171	220	279	341	428	557	712				
95	+/-	0.70				21.9		41.4	68.6	96.8	133	179	230	291	356	446	580	739				
100	+/-	0.70				23.0		43.3	71.7	101	139	186	240	303	370	464	603	767	951			
110	+/-	0.70				25.2		47.2	76.6	109	151	202	260	327	400	500	650	823	1.020	1.240		
120	+/-	0.70				27.3		51.1	82.2	118	164	218	280	351	430	535	695	880	1.090	1.320	1.510	
130	+/-	0.80				29.7		54.1	87.6	126	174	230	296	374	450	560	720	920	1.150	1.390	1.580	
140	+/-	0.80				31.8		57.9	93.6	134	185	246	316	398	480	595	765	975	1.220	1.470	1.660	
150	+/-	0.80				34.0		61.7	99.6	143	195	262	336	422	510	630	810	1.030	1.290	1.550	1.740	
160	+/-	0.80									278	356	446	540	665	855	1.085	1.350	1.630	1.830		
170	+/-	0.80										376	470	570	700	900	1.140	1.410	1.710	1.920		
180	+/-	0.80											396	494	600	735	945	1.200	1.480	1.790	2.010	
190	+/-	0.92												519	630	770	990	1.250	1.540	1.870	2.100	
200	+/-	0.92												544	660	805	1.030	1.310	1.610	1.950	2.200	
220	+/-	2.30													720	870	1.130	1.420	1.750	2.110	2.410	
240	+/-	2.30														935	1.220	1.530	1.880	2.270	2.600	
260	+/-	2.60															1.310	1.640	2.020	2.430	2.800	
280	+/-	2.60																1.750	2.150	2.590	3.010	
300	+/-	2.60																	1.860	2.290	2.750	3.210

## II. Thông số kỹ thuật của bulong ren hết.



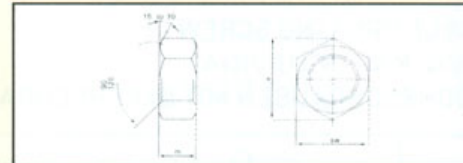
### Technical informations. / Teknik bilgiler.

Thread size / Anma çapı	M3	M4	M5	M6	M7	M8	M10	M12	M14	M16	M18	M20	M22	M24	M27	M30	M33	M36	M39	
Pitch / Diş adımı	P	0.50	0.70	0.80	1.00	1.00	1.25	1.50	1.75	2.00	2.00	2.50	2.50	3.00	3.00	3.50	3.50	4.00	4.00	
Head height / Kafa yüksekliği	k	2.0	2.8	3.5	4.0	4.8	5.3	6.4	7.5	8.8	10.0	11.5	12.50	14.0	15.0	17.0	18.7	21.0	22.5	25.0
	+/-	0.12	0.12	0.15	0.15	0.15	0.15	0.16	0.18	0.18	0.18	0.22	0.22	0.22	0.22	0.35	0.42	0.42	0.42	0.42
Head width/Anahtar a	sw	5.5	7	8	10	11	13	17	19	22	24	27	30	32	36	41	46	50	55	60
Diagonal / Köşegen	e	6.01	7.66	8.79	11.05	12.12	14.38	18.90	21.10	24.49	26.75	30.14	33.53	35.72	39.98	45.20	50.85	55.37	60.79	66.44

Values are given in millimeters. / Değerler milimetre olarak verilmiştir.

Thread size / Anma çapı	M3	M4	M5	M6	M7	M8	M10	M12	M14	M16	M18	M20	M22	M24	M27	M30	M33	M36	M39		
Length / Boy (1)																					
10	+/-	0.29	0.75	1.64	2.63	4.08	6.35	9.10	16.2	23.3	38.0										
12	+/-	0.35	0.84	1.80	2.87	4.42	6.85	9.80	17.2	25.0	40.0	52.9									
14	+/-	0.35	0.92	1.95	3.12	4.76	7.35	10.5	18.2	26.4	42.0	55.6									
16	+/-	0.35	1.00	2.10	3.37	5.11	7.85	11.1	19.2	27.7	44.0	58.3	82.0	105	133	173					
18	+/-	0.35	1.09	2.25	3.62	5.45	8.35	11.7	20.2	29.1	46.0	60.9	84.9	110	137	178					
20	+/-	0.42	1.18	2.41	3.87	5.80	8.85	12.3	21.2	31.0	48.0	63.5	87.2	114	143	184					
22	+/-	0.42	1.27	2.56	4.12	6.15	9.35	12.9	22.2	33.0	50.0	66.2	92.2	119	148	190	269				
25	+/-	0.42	1.40	2.80	4.49	6.65	10.0	13.9	23.7	34.1	53.0	70.2	95.8	124	155	199	280				
28	+/-	0.42	1.52	3.04	4.86	7.15	10.7	14.9	25.2	36.2	55.9	74.2	100	129	161	205	292				
30	+/-	0.42	1.61	3.19	5.11	7.51	11.3	15.5	26.2	37.7	57.9	76.9	104	134	168	214	310				
35	+/-	0.50		3.57	5.73	8.37	12.5	17.1	28.7	41.3	62.9	83.5	112	145	181	229	319	424	543	670	869
40	+/-	0.50		3.96	6.35	9.23	13.8	18.7	31.2	44.9	67.9	90.2	120	155	193	244	338	448	572	714	910
45	+/-	0.50		4.34	6.99	10.1	15.0	20.3	33.7	48.5	72.9	97.1	128	165	206	259	358	472	601	748	951
50	+/-	0.50		4.73	7.59	11.0	16.3	21.8	36.2	52.0	77.9	103	136	176	219	274	377	496	630	783	992
60	+/-	0.60		5.50	8.83	12.7	18.7	25.0	41.3	58.2	87.8	117	153	196	244	304	416	543	688	851	1.070

## II. Thông số kỹ thuật của đai ốc.



### Technical informations. / Teknik bilgiler.

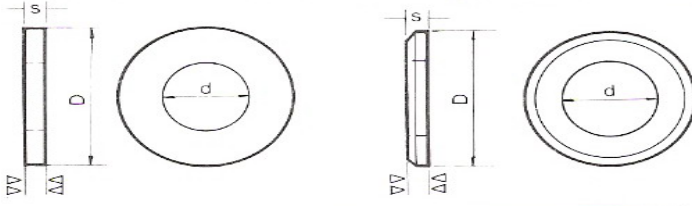
Thread size / Anma çapı	M3	M4	M5	M6	M7	M8	M10	M12	M14	M16	M18	M20	M22	M24	M27	
Pitch / Diş adımı	P	0.50	0.70	0.80	1.00	1.00	1.25	1.50	1.75	2.00	2.00	2.50	2.50	3.00	3.00	
Head width/Anahtar a	sw	5.5	7	8	10	11	13	17	19	22	24	27	30	32	36	41
Diagonal/Köşegen	e	6.01	7.74	8.87	11.05	12.12	14.38	18.90	21.10	24.49	26.75	30.14	33.53	35.72	39.98	45.69
Height/Yükseklik	m	2.4	3.2	4	5	5.5	6.5	8	10	11	13	15	16	18	19	22
	min.	2.10	2.90	3.70	4.70	5.20	6.14	7.64	9.64	10.30	12.30	14.30	14.90	16.90	17.90	20.50
Weight/Ağırlık	gr/p.	0.38	0.81	1.23	2.50	3.12	5.20	11.6	17.3	25.0	33.3	49.4	64.4	79.0	110	165

Thread size / Anma çapı	M30	M33	M36	M39	M42	M45	M48	M52	M56	M60	M64	M68	M72	M76	M80
Pitch / Diş adımı	P	3.50	3.50	4.00	4.00	4.50	4.50	5.00	5.00	5.50	5.50	6.00	6.00	-	-
Head width/Anahtar a	sw	46	50	55	60	65	70	75	80	85	90	95	100	105	110
Diagonal/Köşegen	e	51.29	55.80	61.31	66.96	72.61	78.26	83.91	89.56	95.07	99.21	104.86	110.51	116.16	121.81
Height/Yükseklik	m	24	26	29	31	34	36	38	42	45	48	51	54	58	61
	min.	22.50	24.00	27.00	28.50	32.40	34.40	36.40	40.40	43.40	46.40	49.10	52.10	56.10	59.10
Weight/Ağırlık	gr/p.	223	288	393	502	652	800	977	1220	1420	1690	1980	2300	2670	3040

Values are given in millimeters. / Değerler milimetre olarak verilmiştir.

## VÒNG ĐỆM PHẪNG ( WASHERS )

### Thông số kỹ thuật.



**DIN 125**

Type A  
straight

Type B  
chamfered

**ISO 7089**

**ISO 7090**

**Washer, flat**

Steel  
Stainless steel  
Brass\*  
Polyamide

**Designation :**

flat washer, chamfered, for screw  $\varnothing$  M10, and internal  $\varnothing$  d = DIN 125B - nom. 10.

For screw $\varnothing$	d	D	s	Weights in kg per 1000 p.	Packaging
M3	3,2	7	0,5	0,12	1000
M4	4,3	9	0,8	0,30	
M5	5,3	10	1	0,44	
M6	6,4	12,5	1,6	1,14	500
M7	7,4	14	1,6	1,39	
M8	8,4	17	1,6	2,14	
M10	10,5	21	2	4,08	200
M12	13	24	2,5	6,27	
M14	15	28	2,5	8,60	
M16	17	30	3	11,3	100
M18	19	34	3	14,7	
M20	21	37	3	17,2	
M22	23	39	3	18,4	50
M24	25	44	4	32,3	
M27	28	50	4	42,3	
M30	31	56	4	53,6	25
M33	34	60	5	75,4	
M36	37	66	5	92	
M39	40	72	6	133	
M42	43	78	7	183	
M45	46	85	7	220	
M48	50	92	8	294	
M52	54	98	8	330	
M56	58	105	9	425	
M58	60	110	9	471	
M64	66	115	9	492	
M72	74	125	10	625	

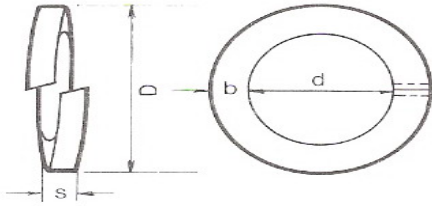
\* In case of brass, weights are to be multiplied by 1,08.

**Execution :**

m as per DIN 522

## VÒNG ĐỆM VÊNH ( SPRING )

### Thông số kỹ thuật.



### Helical spring lock washer ("Grower")

Spring steel  
Stainless steel

### DIN 127

#### Designation :

helical spring washer "Grower" for screw  $\varnothing$  M12 and 12,2 mm inside  $\varnothing$  d = DIN 127 - nom. 12.

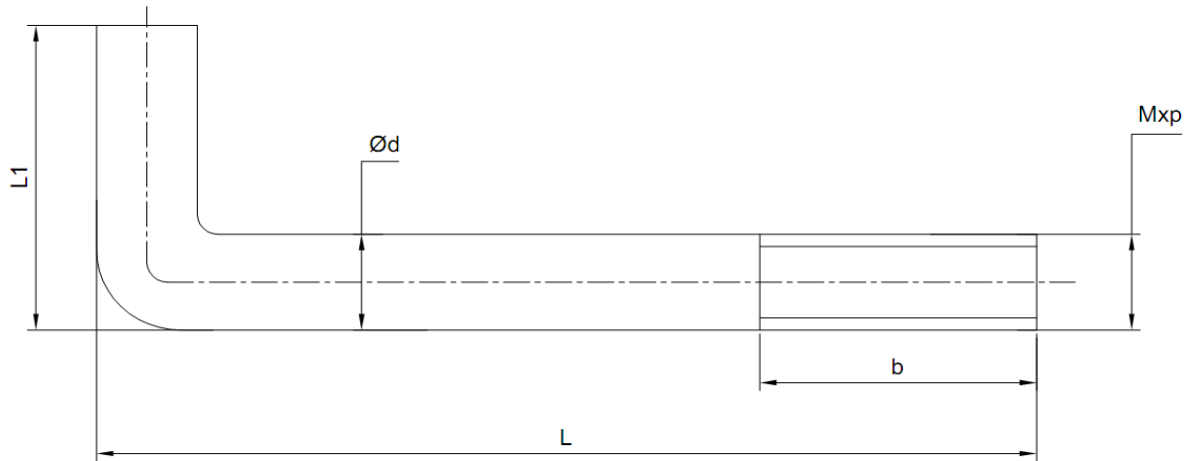
For screws		d	D max.	b	s	Weights in kg per 1000 p.	Pack.
Metr.	WW						
M2		2,1 + 0,3	4,4	0,9 ± 0,1	0,5 ± 0,1	0,03	100
M2,5		2,6 + 0,3	5,1	1 ± 0,1	0,6 ± 0,1	0,05	
M3		3,1 + 0,3	6,2	1,3 ± 0,1	0,8 ± 0,1	0,11	
M3,5	1/8	3,6 + 0,3	6,7	1,3 ± 0,1	0,8 ± 0,1	0,12	500
M4	5/32	4,1 + 0,3	7,6	1,5 ± 0,1	0,9 ± 0,1	0,18	
M5	3/16	5,1 + 0,3	9,2	1,8 ± 0,1	1,2 ± 0,1	0,36	
M6		6,1 + 0,4	11,8	2,5 ± 0,15	1,6 ± 0,1	0,83	200
M7	1/4	6,5 + 0,4	12,2	2,5 ± 0,15	1,6 ± 0,1	0,93	
M8	5/16	7,1 + 0,4	12,8	2,5 ± 0,15	1,6 ± 0,1	0,93	
M10	3/8	8,1 + 0,4	14,8	3 ± 0,15	2 ± 0,1	1,60	100
M12	7/16	10,2 + 0,5	18,1	3,5 ± 0,2	2,2 ± 0,15	2,53	
M14	1/2	11,3 + 0,5	19,2	3,5 ± 0,2	2,2 ± 0,15	3,00	
M16	5/8	12,2 + 0,5	21,1	4 ± 0,2	2,5 ± 0,15	3,82	50
M18		13 + 0,5	21,9	4 ± 0,2	2,5 ± 0,15	3,95	
M20	3/4	14,2 + 0,5	24,1	4,5 ± 0,2	3 ± 0,15	6,01	
M22	7/8	16,2 + 0,8	27,4	5 ± 0,2	3,5 ± 0,2	8,91	25
M24	1"	18,2 + 0,8	29,4	5 ± 0,2	3,5 ± 0,2	9,73	
M27		20,2 + 1	33,6	6 ± 0,2	4 ± 0,2	15,2	
M30	1" 1/8	22,5 + 1	35,9	6 ± 0,2	4 ± 0,2	16,5	100
M33	1" 1/4	24,5 + 1	40	7 ± 0,25	5 ± 0,2	26,2	
M36		26,5 + 1	42	7 ± 0,25	5 ± 0,2	27,45	
M39	1" 1/2	27,5 + 1	43	7 ± 0,25	5 ± 0,2	28,7	50
M42	1" 5/8	30,5 + 1,2	48,2	8 ± 0,25	6 ± 0,2	44,3	
M45	1" 3/4	32,5 + 1,2	50,2	8 ± 0,25	6 ± 0,2	44,3	
M48		33,5 + 1,2	55,2	10 ± 0,25	6 ± 0,2	63,0	25
M50		36,5 + 1,2	58,2	10 ± 0,25	6 ± 0,2	67,3	
M52		39,5 + 1,2	61,2	10 ± 0,25	6 ± 0,2	71,7	
M52		42,5 + 1,2	68,2	12 ± 0,25	7 ± 0,25	111	100
M52		45,5 + 1,2	71,2	12 ± 0,25	7 ± 0,25	117	
M52		49 + 1,5	75	12 ± 0,25	7 ± 0,25	123	
M52		51 + 1,5	77	12 ± 0,25	7 ± 0,25	152	100
M52		53 + 1,5	83	14 ± 0,25	8 ± 0,25	182	

#### Execution :

as per DIN 522 and DIN 267/26

## BULONG MÓNG KIỂU L ( ANCHOR BOLT TYPE L )

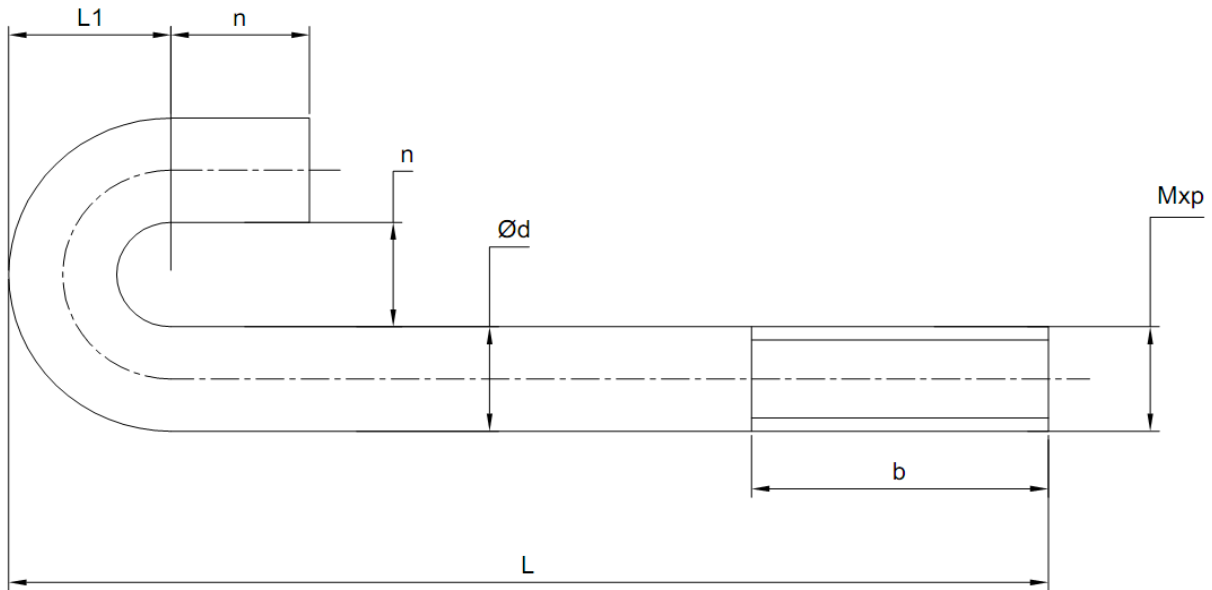
### Thông số kỹ thuật.



Size	Mxp	Ød	L1	b	Grade	Coat
M14	2	14±0.2	50	40	4.8, 5.6, 8.8	Plain, E-Galvanized, Hot-Galvanized
M16	2	16±0.2	50	45	4.8, 5.6, 8.8	Plain, E-Galvanized, Hot-Galvanized
M18	2.5	18±0.3	60	50	4.8, 5.6, 8.8	Plain, E-Galvanized, Hot-Galvanized
M20	2.5	20±0.3	60	55	4.8, 5.6, 8.8	Plain, E-Galvanized, Hot-Galvanized
M22	2.5	22±0.3	60	55	4.8, 5.6, 8.8	Plain, E-Galvanized, Hot-Galvanized
M24	3	24±0.3	80	60	4.8, 5.6, 8.8	Plain, E-Galvanized, Hot-Galvanized
M27	3	27±0.4	80	65	4.8, 5.6, 8.8	Plain, E-Galvanized, Hot-Galvanized
M30	3.5	30±0.4	80	70	4.8, 5.6, 8.8	Plain, E-Galvanized, Hot-Galvanized
M33	3.5	33±0.5	100	75	4.8, 5.6, 8.8	Plain, E-Galvanized, Hot-Galvanized
M36	4	36±0.5	120	90	4.8, 5.6, 8.8	Plain, E-Galvanized, Hot-Galvanized
M42	4.5	42±0.5	150	120	4.8, 5.6, 8.8	Plain, E-Galvanized, Hot-Galvanized
M48	5	48±0.6	190	150	4.8, 5.6, 8.8	Plain, E-Galvanized, Hot-Galvanized
M56	5.5	56±0.6	220	200	4.8, 5.6, 8.8	Plain, E-Galvanized, Hot-Galvanized

## BULONG MÓNG KIỂU J ( ANCHOR BOLT TYPE J )

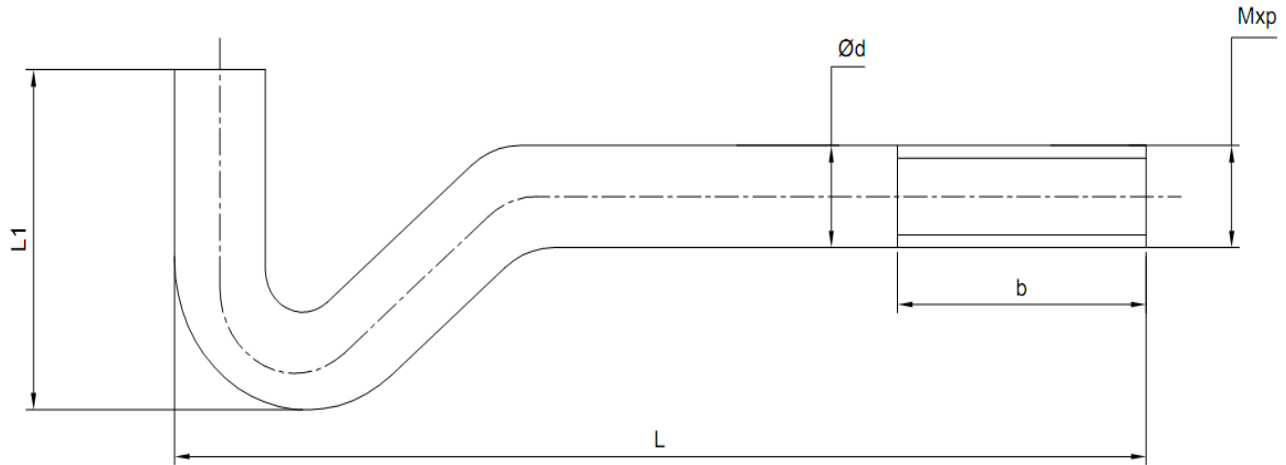
### Thông số kỹ thuật.



Size	Mxp	Ød	L1	b	Grade	Coat
M14	2	14±0.2	30	40	4.8, 5.6, 8.8	Plain, E-Galvanized, Hot-Galvanized
M16	2	16±0.2	36	45	4.8, 5.6, 8.8	Plain, E-Galvanized, Hot-Galvanized
M18	2.5	18±0.3	40	50	4.8, 5.6, 8.8	Plain, E-Galvanized, Hot-Galvanized
M20	2.5	20±0.3	45	55	4.8, 5.6, 8.8	Plain, E-Galvanized, Hot-Galvanized
M22	2.5	22±0.3	50	55	4.8, 5.6, 8.8	Plain, E-Galvanized, Hot-Galvanized
M24	3	24±0.3	55	60	4.8, 5.6, 8.8	Plain, E-Galvanized, Hot-Galvanized
M27	3	27±0.4	60	65	4.8, 5.6, 8.8	Plain, E-Galvanized, Hot-Galvanized
M30	3.5	30±0.4	90	70	4.8, 5.6, 8.8	Plain, E-Galvanized, Hot-Galvanized
M33	3.5	33±0.5	100	75	4.8, 5.6, 8.8	Plain, E-Galvanized, Hot-Galvanized
M36	4	36±0.5	110	90	4.8, 5.6, 8.8	Plain, E-Galvanized, Hot-Galvanized
M42	4.5	42±0.5	130	120	4.8, 5.6, 8.8	Plain, E-Galvanized, Hot-Galvanized
M48	5	48±0.6	140	150	4.8, 5.6, 8.8	Plain, E-Galvanized, Hot-Galvanized
M56	5.5	56±0.6	200	200	4.8, 5.6, 8.8	Plain, E-Galvanized, Hot-Galvanized

## BULONG MÓNG KIỂU LA ( ANCHOR BOLT TYPE LA )

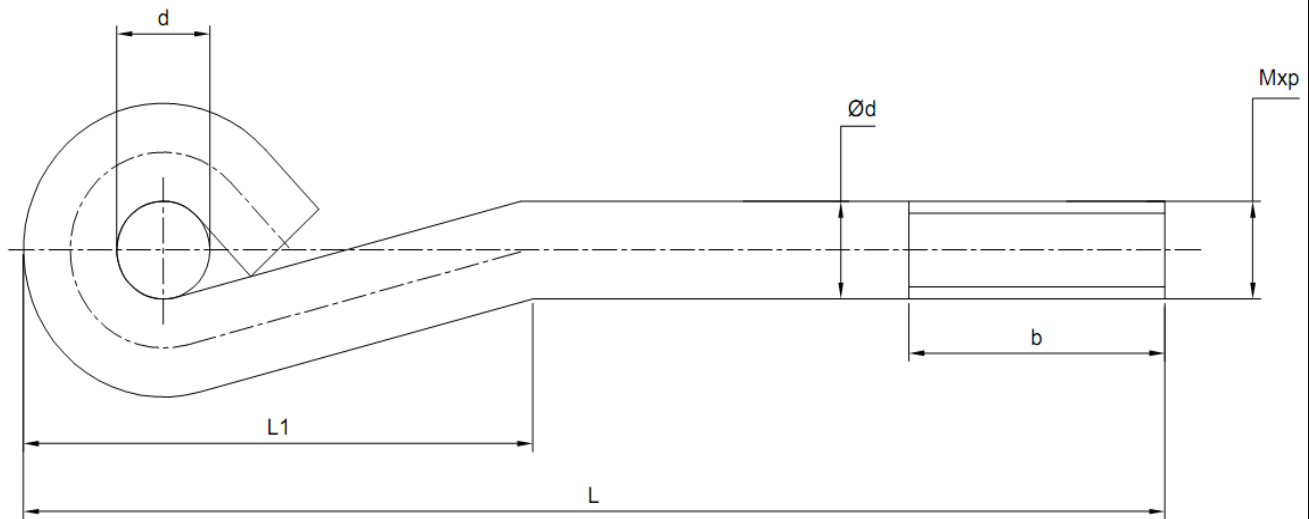
### Thông số kỹ thuật.



Size	Mxp	Ød	L1	b	Grade	Coat
M14	2	14±0.2	90	40	4.8, 5.6, 8.8	Plain, E-Galvanized, Hot-Galvanized
M16	2	16±0.2	90	45	4.8, 5.6, 8.8	Plain, E-Galvanized, Hot-Galvanized
M18	2.5	18±0.3	95	50	4.8, 5.6, 8.8	Plain, E-Galvanized, Hot-Galvanized
M20	2.5	20±0.3	100	55	4.8, 5.6, 8.8	Plain, E-Galvanized, Hot-Galvanized
M22	2.5	22±0.3	100	55	4.8, 5.6, 8.8	Plain, E-Galvanized, Hot-Galvanized
M24	3	24±0.3	120	60	4.8, 5.6, 8.8	Plain, E-Galvanized, Hot-Galvanized
M27	3	27±0.4	120	65	4.8, 5.6, 8.8	Plain, E-Galvanized, Hot-Galvanized
M30	3.5	30±0.4	150	70	4.8, 5.6, 8.8	Plain, E-Galvanized, Hot-Galvanized
M33	3.5	33±0.5	190	75	4.8, 5.6, 8.8	Plain, E-Galvanized, Hot-Galvanized
M36	4	36±0.5	200	90	4.8, 5.6, 8.8	Plain, E-Galvanized, Hot-Galvanized
M42	4.5	42±0.5	220	120	4.8, 5.6, 8.8	Plain, E-Galvanized, Hot-Galvanized
M48	5	48±0.6	250	150	4.8, 5.6, 8.8	Plain, E-Galvanized, Hot-Galvanized
M56	5.5	56±0.6	300	200	4.8, 5.6, 8.8	Plain, E-Galvanized, Hot-Galvanized

## BULONG MÓNG KIỂU LJ ( ANCHOR BOLT TYPE LJ )

### Thông số kỹ thuật.

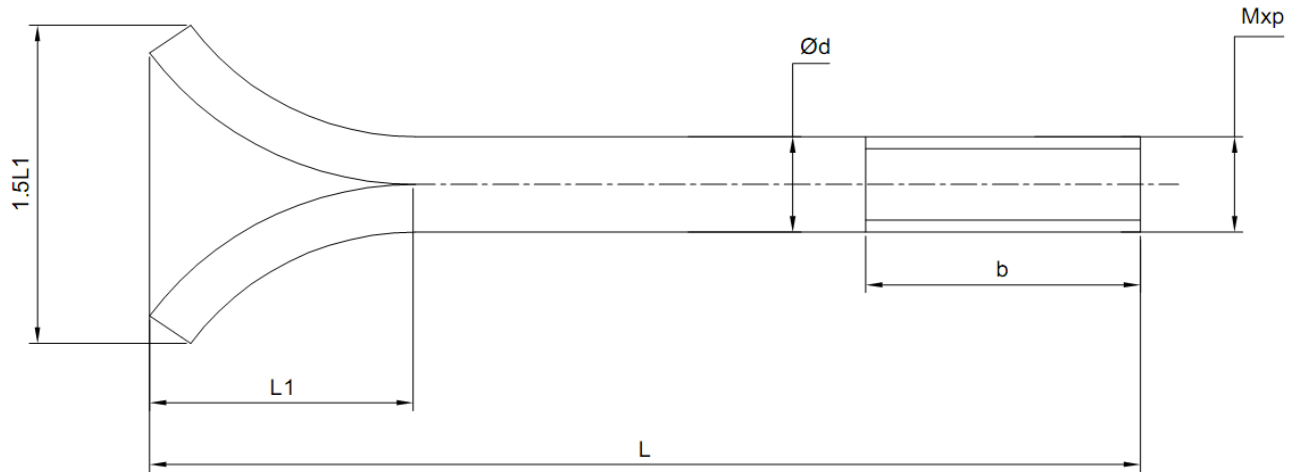


Size	Mxp	Ød	L1	b	Grade	Coat
M14	2	14±0.2	70	40	4.8, 5.6, 8.8	Plain, E-Galvanized, Hot-Galvanized
M16	2	16±0.2	80	45	4.8, 5.6, 8.8	Plain, E-Galvanized, Hot-Galvanized
M18	2.5	18±0.3	80	50	4.8, 5.6, 8.8	Plain, E-Galvanized, Hot-Galvanized
M20	2.5	20±0.3	85	55	4.8, 5.6, 8.8	Plain, E-Galvanized, Hot-Galvanized
M22	2.5	22±0.3	90	55	4.8, 5.6, 8.8	Plain, E-Galvanized, Hot-Galvanized
M24	3	24±0.3	100	60	4.8, 5.6, 8.8	Plain, E-Galvanized, Hot-Galvanized
M27	3	27±0.4	110	65	4.8, 5.6, 8.8	Plain, E-Galvanized, Hot-Galvanized
M30	3.5	30±0.4	120	70	4.8, 5.6, 8.8	Plain, E-Galvanized, Hot-Galvanized
M33	3.5	33±0.5	140	75	4.8, 5.6, 8.8	Plain, E-Galvanized, Hot-Galvanized
M36	4	36±0.5	150	90	4.8, 5.6, 8.8	Plain, E-Galvanized, Hot-Galvanized
M42	4.5	42±0.5	190	120	4.8, 5.6, 8.8	Plain, E-Galvanized, Hot-Galvanized
M48	5	48±0.6	200	150	4.8, 5.6, 8.8	Plain, E-Galvanized, Hot-Galvanized
M56	5.5	56±0.6	300	200	4.8, 5.6, 8.8	Plain, E-Galvanized, Hot-Galvanized



## BULONG MÓNG KIỂU X ( ANCHOR BOLT TYPE X )

### Thông số kỹ thuật.



Size	Mxp	Ød	L1	b	Grade	Coat
M14	2	14±0.2	30	40	4.8, 5.6, 8.8	Plain, E-Galvanized, Hot-Galvanized
M16	2	16±0.2	30	45	4.8, 5.6, 8.8	Plain, E-Galvanized, Hot-Galvanized
M18	2.5	18±0.3	40	50	4.8, 5.6, 8.8	Plain, E-Galvanized, Hot-Galvanized
M20	2.5	20±0.3	40	55	4.8, 5.6, 8.8	Plain, E-Galvanized, Hot-Galvanized
M22	2.5	22±0.3	45	55	4.8, 5.6, 8.8	Plain, E-Galvanized, Hot-Galvanized
M24	3	24±0.3	50	60	4.8, 5.6, 8.8	Plain, E-Galvanized, Hot-Galvanized
M27	3	27±0.4	50	65	4.8, 5.6, 8.8	Plain, E-Galvanized, Hot-Galvanized
M30	3.5	30±0.4	55	70	4.8, 5.6, 8.8	Plain, E-Galvanized, Hot-Galvanized
M33	3.5	33±0.5	90	75	4.8, 5.6, 8.8	Plain, E-Galvanized, Hot-Galvanized
M36	4	36±0.5	100	90	4.8, 5.6, 8.8	Plain, E-Galvanized, Hot-Galvanized
M42	4.5	42±0.5	120	120	4.8, 5.6, 8.8	Plain, E-Galvanized, Hot-Galvanized
M48	5	48±0.6	150	150	4.8, 5.6, 8.8	Plain, E-Galvanized, Hot-Galvanized
M56	5.5	56±0.6	190	200	4.8, 5.6, 8.8	Plain, E-Galvanized, Hot-Galvanized

## BULONG MÓNG PHI TIÊU CHUẨN

